



BOARD PRESENTATION

Board: #7020

Size: 14' x 48'

City: Dothan, AL

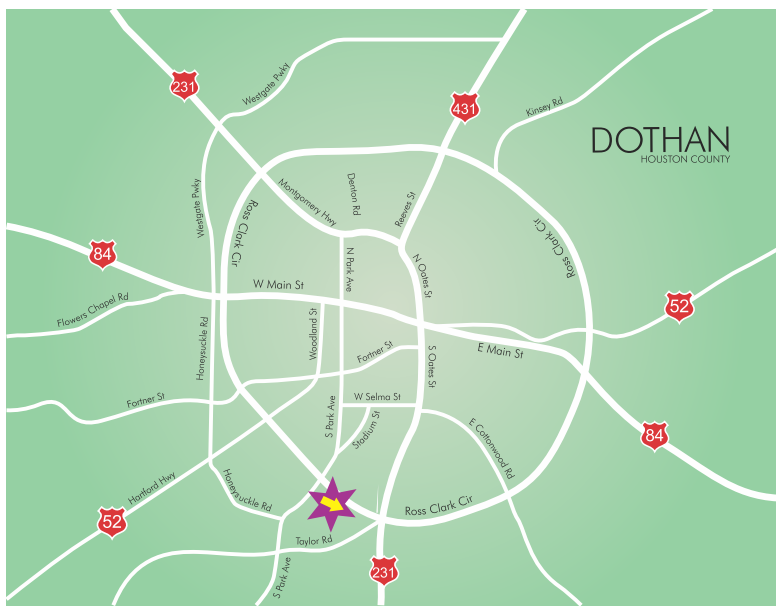
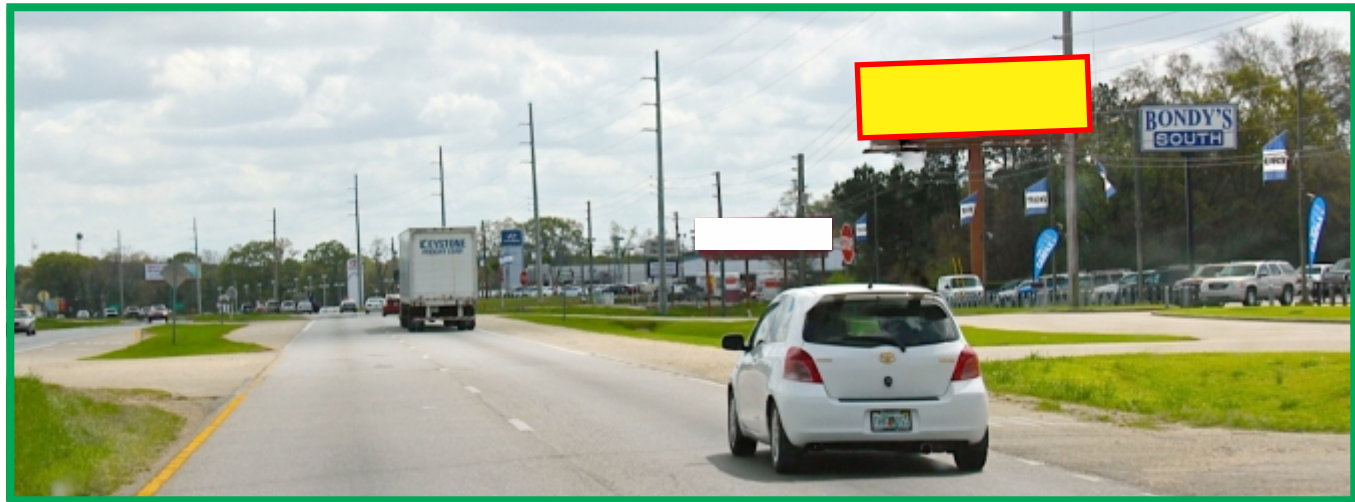
Location: Ross Clark Circle/East of Park Street / Facing North

Latitude/Longitude: 31.19562, -85.41171

D.E.C: 33,770

Proximities: Bondy's Car Sales, Subway, Toyota of Dothan, Mercedes of Dothan
Harley Davidson, Hyundai of Dothan & SE AL Gas District

Red Light Read



14 x 48 BULLETIN